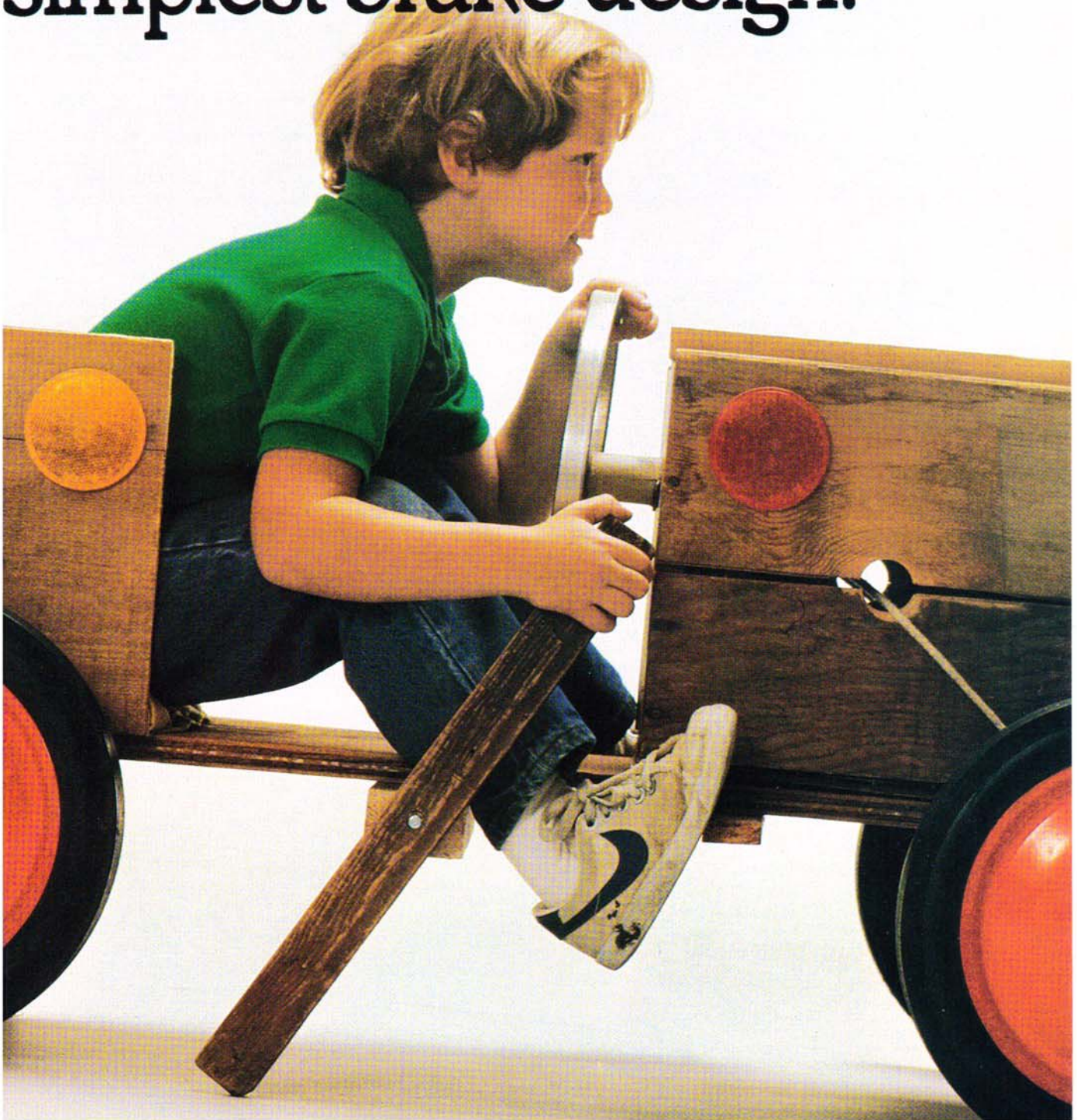


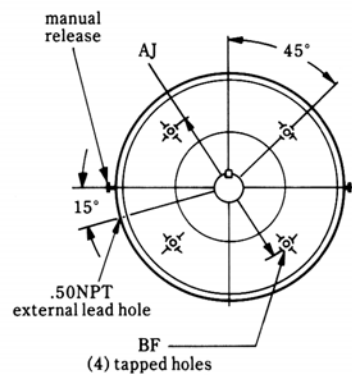
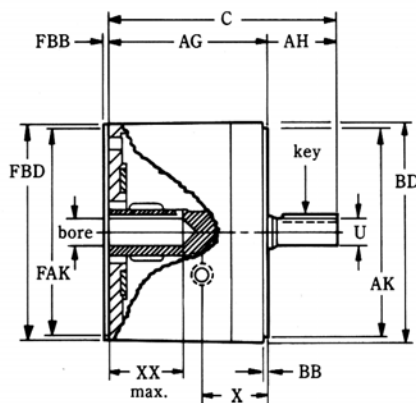
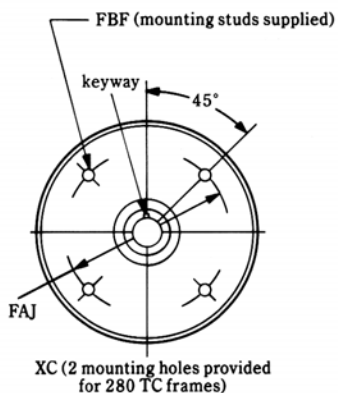
Reuland.  
The world's second  
simplest brake design.





# Nema Double "C" Face-X Series Specifications

MODEL	NOMINAL STATIC TORQUE (LBS./FEET)	NEMA MOTOR FRAME	APPROXIMATE SHIPPING WEIGHT
XH	1.5 - 3 - 6 - 10	56 C thru 145 TC	22 lbs.
XA	3 - 6 - 10 - 15	180 TC thru 210 TC	27 lbs.
XB	15 - 25 - 35		29 lbs.
XC	50 - 75	213 TC thru 286 TC	80 lbs.

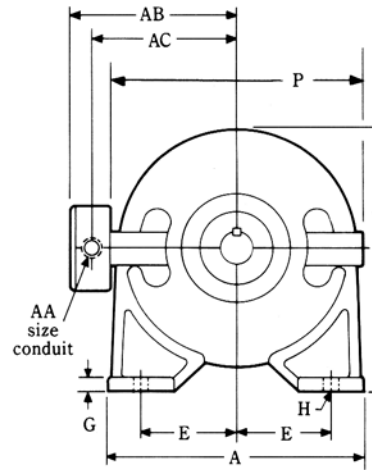
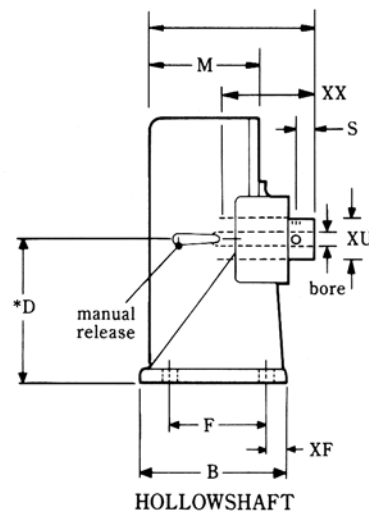
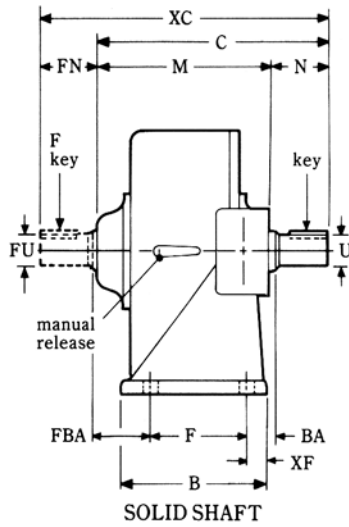


AVAILABLE STANDARD BORES					
MODEL XH		MODEL XA-XB		MODEL XC	
Bore	Keyway	Bore	Keyway	Bore	Keyway
.625	3/16	1.125	1/4	1.375	5/16
.750	3/16	1.375	5/16	1.625	3/8
.875	3/16	1.625	3/8	1.875	1/2
1.000	1/4	—	—	—	—

MODEL	FRAME	C	U	BB	KEY	AG	AH	AK	BF	BD	FBD	FAK	FBF	XX	FBB	X
XH	56 C	6.31	.6250	.12	.19	4.25	2.06	4.500	3/8-16	7.00	6.94	4.50	13/32	2.25	.19	1.88
	140 TC	6.38	.8750				2.12									
XA	180 TC	7.62	1.1250	.25	.31	5.00	2.62	8.500	1/2-13	9.00	8.81	8.500	17/32	3.19	.22	2.75
	210 TC	8.12	1.3750				3.12									
XB	180 TC	8.88	1.1250	.25	.31	6.25	2.62	8.500	1/2-13	11.12	10.88	8.500	17/32	4.71	.22	2.62
	210 TC	9.38	1.3750				3.12									
XC	210 TC	10.25	1.3750	.31	.38	7.12	3.12	10.500	1/2-13	11.12	10.88	8.500	17/32	4.71	.22	2.62
	250 TC	10.88	1.6250				3.75									
	280 TC	11.50	1.8750	.50	.50	7.12	4.38	10.500	1/2-13	11.12	10.88	8.500	17/32	4.71	.22	2.62
							4.38									

# Shaft/Foot Mounted Specifications

MODEL	NOMINAL STATIC TORQUE (LBS./FEET)	NEMA MOTOR FRAME	APPROXIMATE SHIPPING WEIGHT
A	3 - 6 - 10 - 15	140T thru 180T	40 lbs.
B	15 - 25 - 35	180T thru 210T	46 lbs.
C	50 - 75	250T thru 280T	95 lbs.
C-2	105 - 125 - 150	280T thru 320T	190 lbs.
L	15 - 25 - 35	180T thru 210T	42 lbs.



AVAILABLE STANDARD SHAFTS					
Frame	N (FN)	U (FU)	Key	Bore	Keyway
140T	2.25	.8750	3/16	.875	3/16
180T	2.75	1.125	1/4	1.125	1/4
210T	3.38	1.375	5/16	1.375	5/16
250T	4.00	1.625	3/8	1.625	3/8
280T	4.62	1.875	1/2	1.875	1/2
320T	5.25	2.125		—	—

HOLLOWSHAFT BRAKE NOT AVAILABLE IN 320T FRAMES AND MODEL C-2 BRAKE

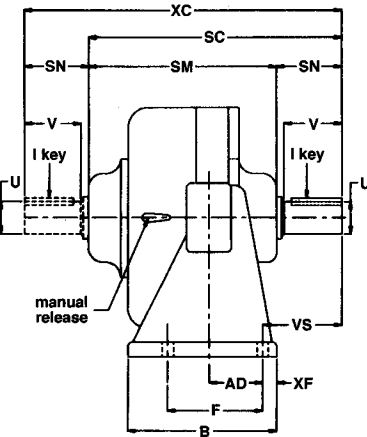
MODEL	A	B	C	D	E	F	G	H	M	O	P
A	10.00	4.56	9.38	5.00	4.00	2.75	.50	7/16	6.12	9.38	9.25
B			10.56						7.31		
C	12.00	7.44	12.69	7.00	4.75	4.75	.75	9/16	9.44	12.56	11.12
C-2			17.94						14.81		
L	10.00	4.56	9.31	5.00	4.00	2.75	.50	7/16	6.06	9.38	9.25

MODEL	S	XX	XC	XF	XU	AA	AB	AC	BA	FBA
A	1.00	2.88	12.62	.44	1.62	.50	7.44	6.12	.69	3.19
B			13.81							4.38
C	.75	4.12	15.94	.69	3.00		8.44	7.12	.94	4.25
C-2	—	—	21.06	.62	—		—	—	5.94	4.38
L	1.00	2.88	12.56	.44	1.62		7.44	6.12	.38	3.38

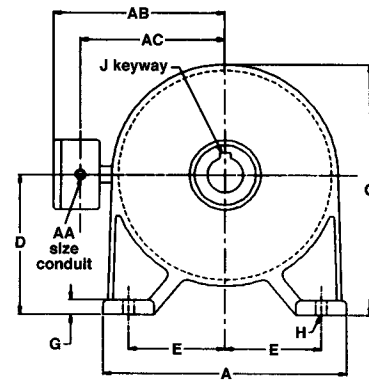
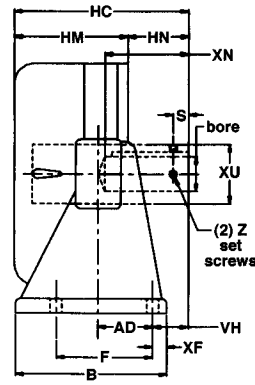
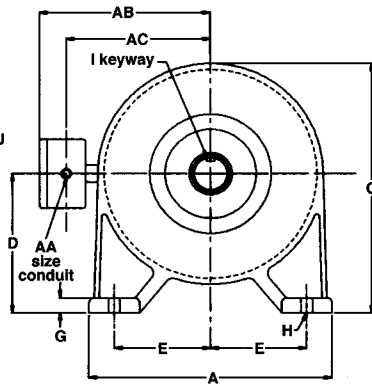
# Solid Shaft/Hollow Shaft Foot Mounted - O Series

## Specifications

MODEL	NOMINAL STATIC TORQUE (LBS./FEET)	NEMA MOTOR FRAME	APPROXIMATE SHIPPING WEIGHT
OA	3 - 6 - 10 - 15	140T thru 180T	40 lbs.
OB	15 - 25 - 35	180T thru 210T	46 lbs.
OC	50 - 70	250T thru 280T	95 lbs.
OC-2	105 - 125 - 150	280T thru 320T	190 lbs.
OL	15 - 25 - 35	180T thru 210T	42 lbs.



**Solid Shaft Brake**



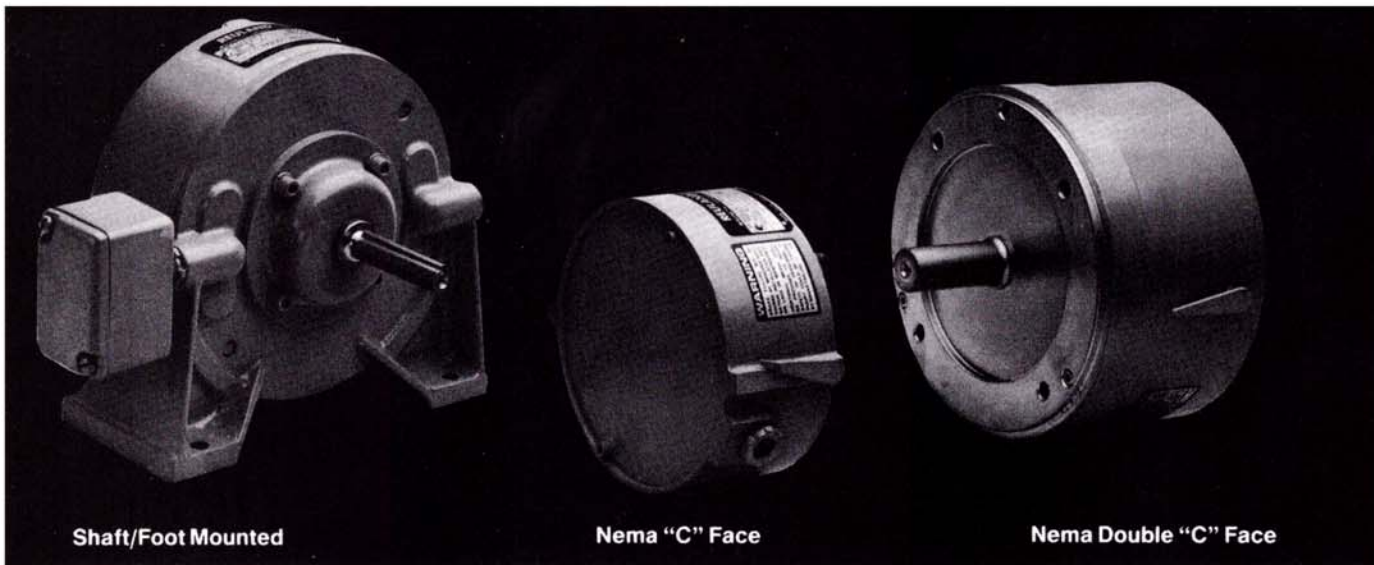
**Hollow Shaft Brake**

not available in OC-2 model

AVAILABLE HOLLOW BORES							
MODEL OA		MODEL OB		MODEL OC		MODEL OL	
BORE	J KEYWAY	BORE	J KEYWAY	BORE	J KEYWAY	BORE	J KEYWAY
.625	3/16	.875	3/16	1.375	5/16	.625	3/16
.750	3/16	1.00	1/4	1.500	3/8	.750	3/16
.875	3/16	1.125	1/4	1.625	3/8	.875	3/16
1.00	1/4	—	—	1.750	1/2	1.00	1/4
1.125	1/4	—	—	1.875	1/2	1.125	1/4

MODEL	A	B	SC	HC	D	E	F	G	H	SM	HM	SN	HN	O
OA	10.00	4.56	9.39	5.62	5.00	4.00	2.75	.50	7/16	6.12	3.88	3.25	1.75	9.38
OB			10.56	6.12						7.31	4.94		1.19	
OC	12.00	7.44	12.69	8.56	7.00	4.75	4.75	.75	9/16	9.44	5.565	3.12	3.00	12.56
OC-2			17.94	NA						14.81	NA		NA	
OL	10.00	4.56	9.31	5.94	5.00	4.00	2.75	.50	7/16	6.06	4.19	3.25	1.75	9.50

MODEL	U	XU	XC	XF	XN	AA	AB	AC	AD	S	V	VS	VH	Z	I KEY
OA	1.000	1.625	12.62	.44	2.88	.50	7.44	6.12	.44	1.00	2.88	3.69	1.00	1/4-20	1/4
OB	1.250		13.81										.44		
OC	1.625	3.00	15.94	.69	4.12		8.44	7.12	2.69	.75	3.94	1.75	3/8-16	3/8	
OC-2	1.750	NA	21.06	.62	NA		.62	NA	NA	3.00	8.94	NA	NA		
OL	1.250	1.625	12.56	.44	2.88		7.44	6.12	.44	1.00	2.88	3.38	1.00	1/4-20	1/4



Shaft/Foot Mounted

Nema "C" Face

Nema Double "C" Face

# The simple secret inside our direct acting magnetic disc brake: only one moving part.

Ask any maintenance engineer. The fewer the moving parts, the less there is to break down and wear out.

That's the simple logic Reuland engineers used to design this heavy duty magnetic disc brake.

It has just seven major parts. And only one of them moves. The armature.

The electromagnet attracts the armature away from the brake lining. Then the instant current is shut off, the springloaded armature is thrust against the brake lining for a fast positive stop. And the brake holds until power resumes. Then the magnet retracts the armature, automatically releasing the brake.

In case of a power failure, the drive automatically stops. And a manual release is positioned outside.

The Reuland brake design eliminates linkage and levers. And the maintenance problems that come with them.

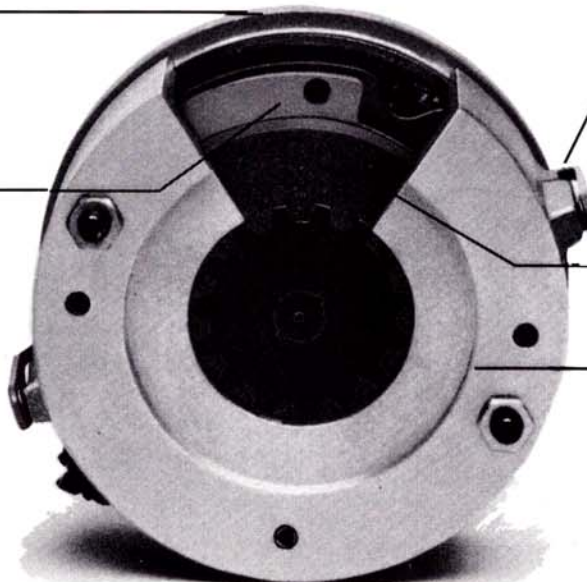
Plus, we assemble our brake from all heavy-duty components for trouble-free operation. The brake lining is a very tough, durable material.

Spring pressure automatically compensates for lining wear. And safety stops are designed into the brake housing which prevents the armature from pressing the lining beyond its maximum wear point. The housing, made of cast metal, provides protection from external damages.

This heavy duty brake is available from 1.5 to 150 lb./ft., Standard C Face, Double C Face and Foot Mounted.

Electromagnet. The instant that current is shut off, spring pressure on the armature forces the brake lining against the housing.

The Reuland magnetic disc brake is direct acting, designed with a single moving part—the armature. The levers and linkages of ordinary brakes are eliminated. Maintenance is nearly done away with.



A manual brake release lever is positioned outside the housing, unlike some brakes that require removal of the housing for release. Manual operation is simple in a power failure.

The durable, heavy duty lining is self adjusting over time.

Reuland's heavy duty housings are cast aluminum and cast iron to protect the brake from damage.

## Specifications:

OPERATION: Spring Set/Magnetically released.

TORQUE RATINGS: 1.5 thru 150 lb./ft. — Nominal Static Torque, adjustable torque rating with Model A, and L brakes (all others non-adjustable).

VOLTAGE: NEMA standard AC and DC\* (\*applies to Models XC, C, C-2 and L only).

PHASE: Three

FREQUENCY: 60

INSULATION: Standard Class B.

ENCLOSURE: Cast Aluminum and Cast Iron (Models XC, C and C-2 only)

RATING: Continuous duty.

MOUNTING: NEMA C face or Foot Mounted.

NEMA FRAME SIZES: 56c thru 280TC

THERMAL CAPACITY: (HP-Sec./Min.): XH8.7, XA & A7, XB & B10, XC & C22, C-2 44 and L8.7.

## Modifications:

SPACE HEATER.

ENCLOSURE: DTWP, Marine Duty.

INSULATION: Class F and H, Super B, F or H.

DUAL VOLTAGE:

Thru shaft construction.

Outboard bearing construction.

Double shaft-foot mounted.

Mounting Adapters for interchanging motor frame sizes and special motor mounting configurations

Special hub bores.

Non-NEMA standard voltages.

## How to order:

- Specify model.
- Specify torque.
- Specify voltage and frequency.
- Specify modifications, if required.
- Specify foot mounted, if required.

---

**REULAND ELECTRIC**  
 THE POWER DRIVE PEOPLE

Reuland Electric

4500 E. Grand River Ave., P. O. Box 10, Howell, MI 48843 (517) 546-4400 TWX: (810) 251-6266

17969 E. Railroad St., P. O. Box 1464, Industry, CA 91749 (818) 964-6411 TWX: (910) 584-1308